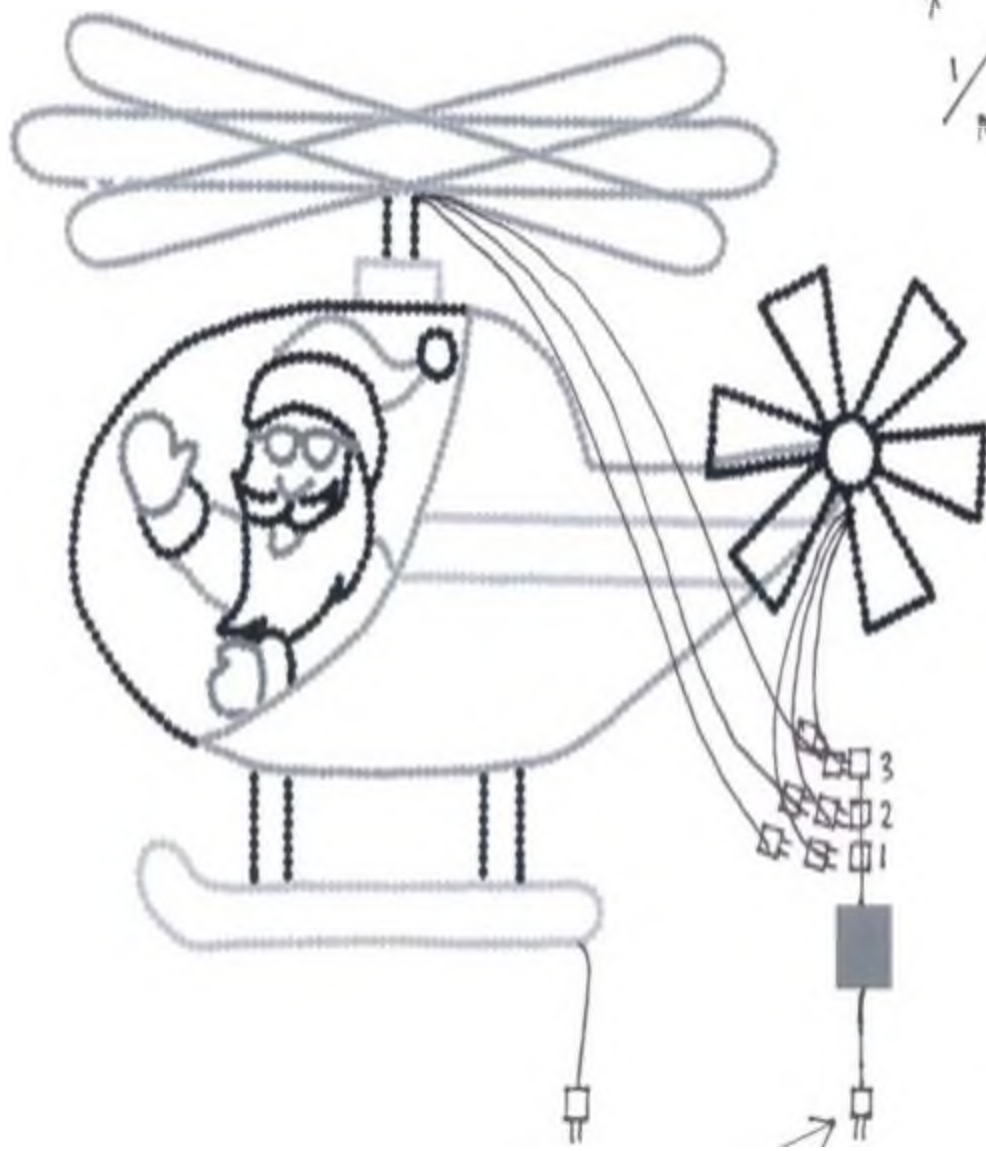
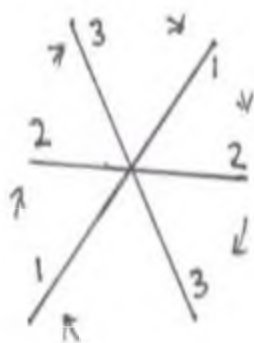


Top view



# SANTA IN HELICOPTER 17 INSTRUCTIONS

Please check that you have all parts. (Located in attached bag)

- 10 wing nuts
- 7 wing bolts
- 2 ground stakes
- 6 white brackets
- 3 jumper cords
- 1 pkg of asst. color clips (replacement)
- 1 gray 3 point controller

1. Unfold Helicopter being careful not to stretch wiring. The Helicopter has two hinges. Attach two small metal plates together by screwing wing bolt with nut into metal plates to hold up display.
2. Attach ground stakes by placing into provided slot and securing with wing nut. Push ground stake gently into the ground. You can do this with your foot and using a back and forth motion to inch each side gradually into the ground. Helicopter will need extra support which is not included. You can do this with an extra stake placed behind the decoration and tied to the frame with a cable tie. These stakes can be wood or metal and can be purchased at your local hardware store.
3. Assemble Helicopter top blades using white brackets and wing bolts and nuts. Once your blades are together, place on top of Helicopter by putting 6 prongs into square tubing. You may need extra support such as guide wires for the blades.
4. Plug Helicopter body, part with unmarked male plugs (non animated part) into an extension cord (not provided).
5. Plug controller into an extension cord. The propellers at top and rotors at the back are each marked with either a Green 1, Red 2 and Yellow 3. The plugs on the blades will need to be stacked. Plug the two propellers marked Green 1 into the Green 1 on the controller. Then plug the two propellers marked Red 2 into the Red 2 on the controller. Plug the two propellers marked Yellow 3 into the Yellow 3 on the controller.
6. Plug the tail rotor plug marked Green 1 into the back of the propeller plug marked Green 1. (you will stack the plugs). Then plug the tail rotor plug marked Red 2 into the back of the propeller plug marked Red 2. Plug the tail rotor plug marked Yellow 3 into Yellow 3 on the controller.
7. Adjust speed to your liking.

For the best look, straighten clips. Also, if you live in an area with lots of rain or snow, you may want to take extra precaution to cover your controllers. See our website for ideas on how to protect your controller.